



2018 GUIMEDIC ANNUAL REPORT





Content

- 3 Introduction
 - 4 Medical Team
 - 5 Purpose of GUIMEDIC's Medical Programs
 - 6 Economic Indicators
 - 7 Comprehensive Medical Care Program
 - 8 Mobile Medical Office
GUIMEDIC Medical Clinics
 - Disease Prevalence
(Statistics of Attention to Indigenous Communities)
 - Comorbidity
(Statistics of Total Medical Attention to Indigenous Mexicans)
 - Support for Patients and Families of Indigenous Communities
 - Donations
 - 15 Disease Prevention and Promotion of Health Education
 - Deworming Campaign
 - Diabetes Mellitus & Hypertension Campaign
 - Influenza Vaccination Campaign
- International Medical Students Volunteers


This activity report discloses the results obtained by GUIMEDIC Humanitarian Medical Association during 2018. With the support of each volunteer medical student from different parts of the world, various private companies and friends; we celebrate 7 years of providing medical care to low-income people promoting health education and disease prevention.

GUIMEDIC humanitarian medical association was founded on February 1, 2011 as non-profit association. Its origin is linked to Dr. Carolina Zuheill Rosales, a humanist doctor and defender of access to health as a human right, who established this association whose primary objectives were to ensure the continuity of medical care for people with limited resources, located in areas of difficult access, who are mostly indigenous communities.

Seven years after it was founded, GUIMEDIC has managed to expand into 5 states of the Mexican Republic which are: Jalisco, Nayarit, Michoacan, Sonora and Chiapas.

During all these years, thanks to the generous collaboration of our counselors, donors, doctors, residents, medical students, administrative staff, we have been able to change the lives of thousands of adults, youth and children, who have managed to improve their quality of life.

Continuing to work for the benefit of the most vulnerable is our greatest reward and motivation to continue moving forward.



“A small group of determined-spirited people, ignited by unwavering faith in their mission, can alter the course of history”.

Gandhi.



MEDICAL Team

- Dr. Carolina Zuheill Rosales
Chairman
- Enrique Brizuela
Secretary
- Dr. Luis Edgardo Alvarado
Volunteer Coordinator
- Dr. Emilia Jiménez
Medical Coordinator
- Dr. Kevin Salas
Medical Coordinator
- Dr. Iliana Medrano Valdovinos
Medical Volunteer
- Dr. Carlos Martínez
Medical Volunteer

Administrative Director

- Dr. José Manuel Pulido Hernández

Volunteer Network with + 800 of Doctors

Purpose

of GUIMEDIC's medical programs:

Provide support in medical care to people located in remote areas of Mexico and in extreme poverty, promoting education and disease prevention.



Economic Indicators

75,912

people benefited from the different medical programs.

72.057_{USD}

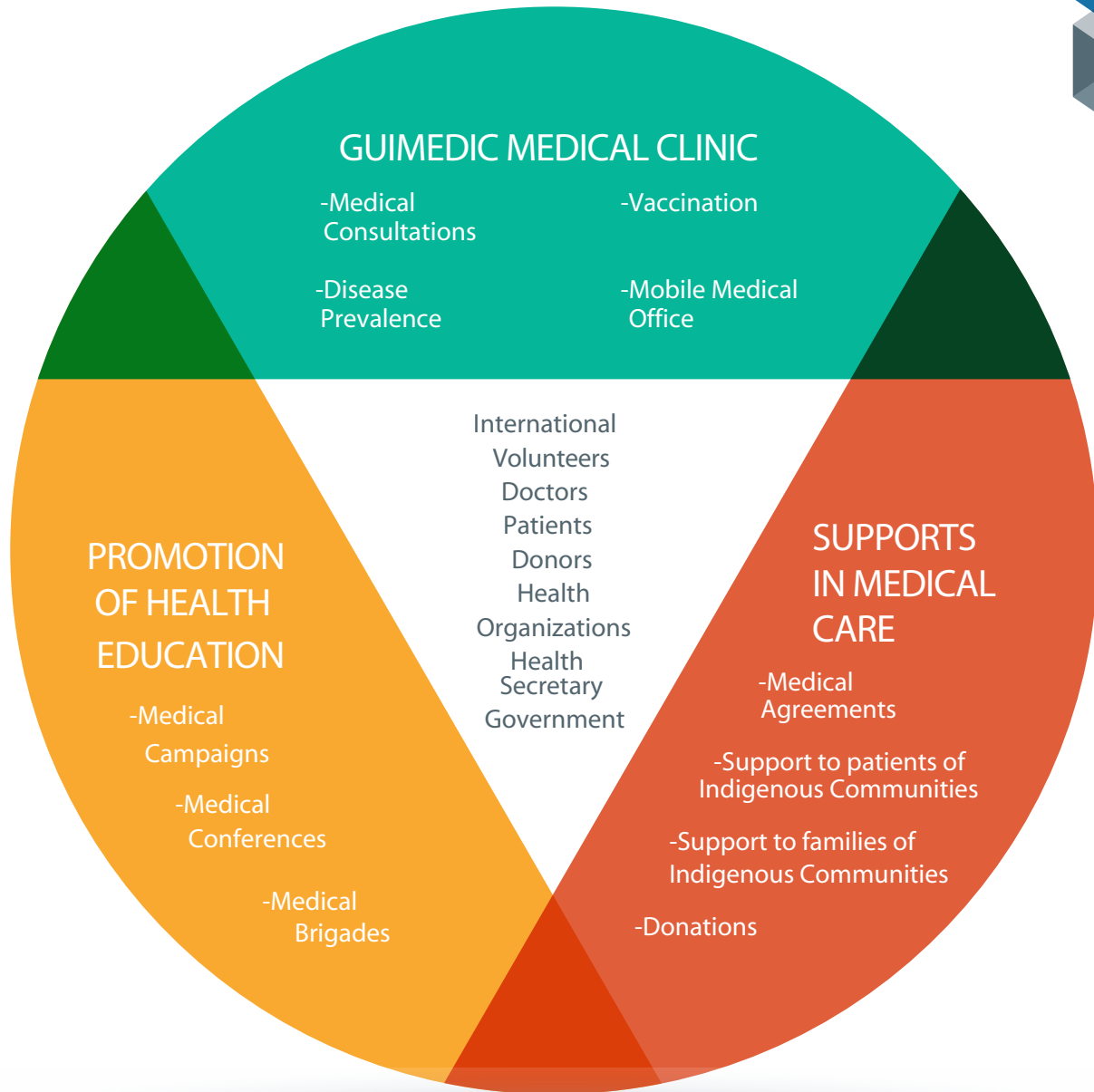
in benefit to the community

Conversion Rate 1USD = 18.74 mexican pesos



The beneficiaries are residents originating from different states of the Mexican Republic, mainly from Nayarit.

Comprehensive Medical Care Program





GUIMEDIC Medical Clinics

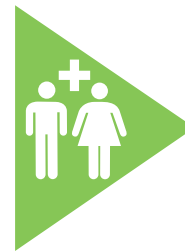
The GUIMEDIC medical care clinic opened its doors in July 2017, in Guadalajara, Mexico.

Currently, the clinic is focused on promoting health in the community of limited resources with prevention services, timely detection and quality medical care, in addition to contributing to state health programs, and supporting the training of volunteer medical students, who travel to Mexico to provide medical care.

Through the Health Care Clinic, GUIMEDIC provides medical services thanks to the support of international volunteer doctors and medical students who seek a comprehensive service with quality and warmth to support the most vulnerable.

GUIMEDIC, through its programs, is also an area where medical students and doctors share knowledge and contribute to the social development of the less favored communities.

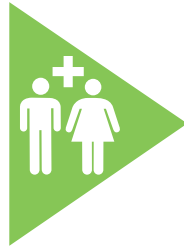
12,227
people benefited with
the medical services of
GUIMEDIC





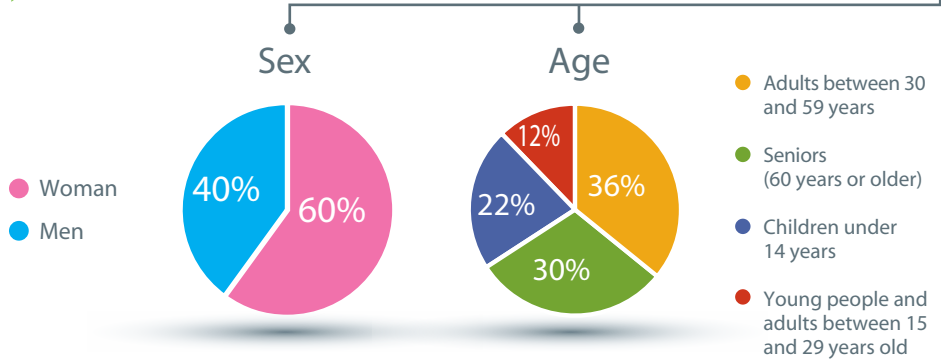
MEDICAL CONSULTATIONS Cora Communities

GUIMEDIC promotes the health of low-income indigenous people and provides them with the following services: emergency care, pregnancy tests, prenatal control, diagnostic studies and medical consultation.



people benefited

8,446



Investment:

2.155USD

Conversion Rate 1USD = 18.74 mexican pesos



Services:

21,574

- 18,206 medical consultations
- 597 prenatal control
- 2,771 diagnostic studies



MEDICAL CONSULTATIONS Huichol Communities

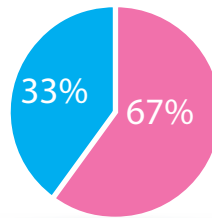
GUIMEDIC promotes the health of low-income indigenous people and provides them with the following services: emergency care, pregnancy tests, prenatal control, diagnostic studies and medical consultation.



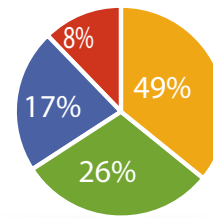
people benefited

17,589

● Woman
● Men



Age



- Adults between 30 and 59 years
- Seniors (60 years or older)
- Children under 14 years
- Young people and adults between 15 and 29 years old



Investment:

4.378USD

Conversion Rate 1USD = 18.74 mexican pesos



Services:

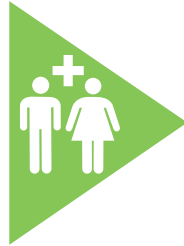
32,791

- 23,402 medical consultations
- 1027 prenatal control
- 8,362 diagnostic studies



MEDICAL CONSULTATIONS Purepecha Communities

GUIMEDIC promotes the health of low-income indigenous people and provides them with the following services: emergency care, pregnancy tests, prenatal control, diagnostic studies and medical consultation.

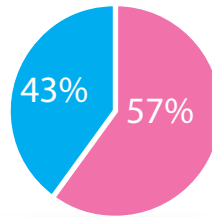


people benefited

15,213

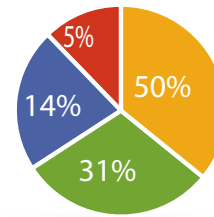
Sex

- Woman
- Men



Age

- Adults between 30 and 59 years
- Seniors (60 years or older)
- Children under 14 years
- Young people and adults between 15 and 29 years old



Investment:

6.899 USD

Conversion Rate 1USD = 18.74 mexican pesos



Services:

44,371

- 32,127 medical consultations
- 2523 prenatal control
- 9,721 diagnostic studies



MEDICAL CONSULTATIONS Triqui Communities

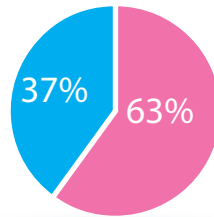
GUIMEDIC promotes the health of low-income indigenous people and provides them with the following services: emergency care, pregnancy tests, prenatal control, diagnostic studies and medical consultation.



people benefited

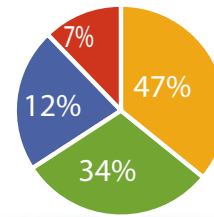
11,831

● Woman
● Men



Sex

Age



- Adults between 30 and 59 years
- Seniors (60 years or older)
- Children under 14 years
- Young people and adults between 15 and 29 years old



Investment:

3.211 USD

Conversion Rate 1USD = 18.74 mexican pesos



Services:

14,110

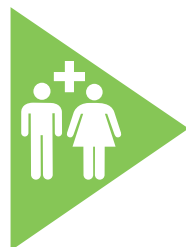
- 8,372 medical consultations
- 1112 prenatal control
- 4,626 diagnostic studies



MEDICAL CONSULTATIONS Vaccination Program

GUIMEDIC offers a vaccination program focused on the eradication of the following diseases

- ▶ Tetanus/Diphtheria
- ▶ Poliomyelitis
- ▶ Hepatitis
- ▶ Influenza



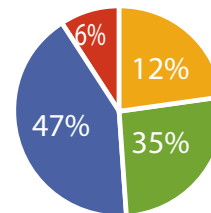
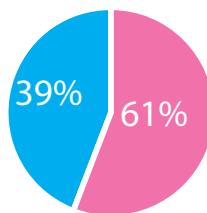
people benefited

3,781

Sexo

Edad

- Mujeres
- Hombres



- Adults between 30 and 59 years
- Seniors (60 years or older)
- Children under 14 years
- Young people and adults between 15 and 29 years old



Investment:

1.020 USD

Conversion Rate 1USD = 18.74 mexican pesos



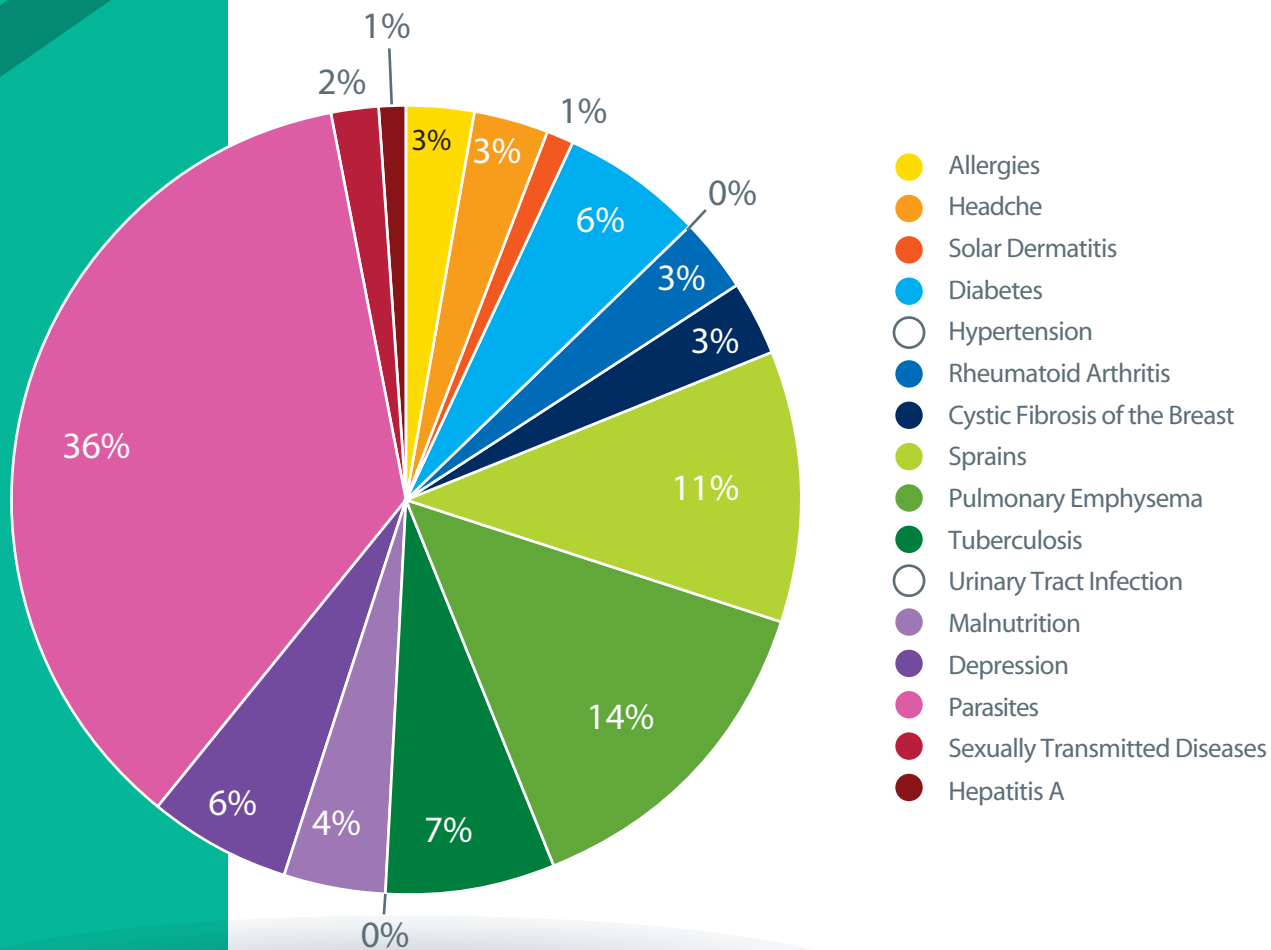
Medical Consultation and
vaccination service:

5,413



Statistics of Attention to Indigenous Communities (Cora, Huichol, Purepecha and Triqui)

DISEASE PREVALENCE



In 2017, GUIMEDIC humanitarian medical association and Grupo VIVE, an association made up by doctors and surviving breast cancer patients, developed a project that aims at the timely diagnosis of breast cancer.

500 women

were reviewed and diagnostic procedures were performed.

GUIMEDIC
Medical
Clinic



MOBILE Medical Office

Medical, nutrition and
psychology
consultations are
offered through
mobile offices



391
patients
treated



128
in psychology



263
in nutrition



MOBILE MEDICAL Office



Investment:

1.034USD

Conversion Rate 1USD = 18.74 mexican pesos



891 patients
treated



901 Services:

391 nutrition and psychology consultations

510 medical consultations



Supports in Medical Care

Supports
in Medical
Care



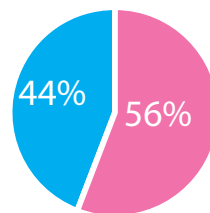
Support to Patients of Indigenous Communities

This support through GUIMEDIC offers people with limited resources to have medical attention in procedures such as cataract surgeries, general surgery and areas not covered by our program



11,552
people benefited with
medical services

● Woman
● Men



26.680USD
for the benefit of the community
Conversion Rate 1USD = 18.74 mexican pesos

Supports
in Medical
Care



Support to Families of Indigenous Communities



113 people
benefited



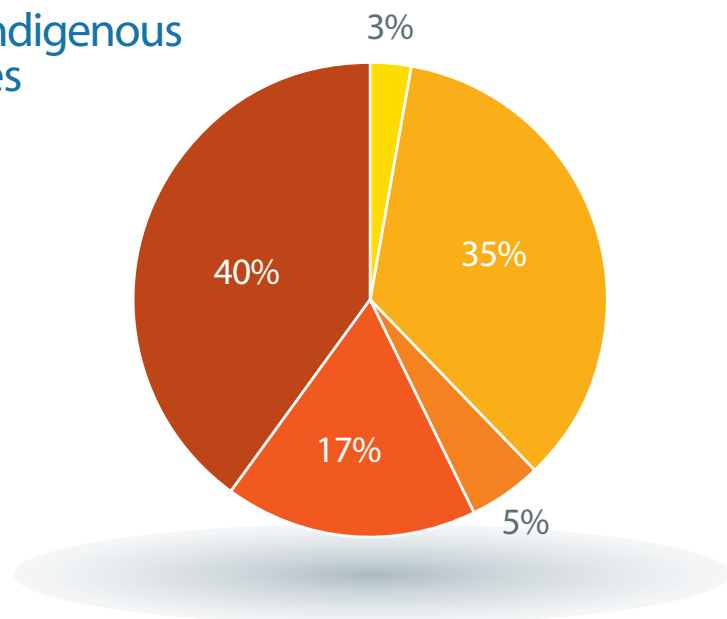
16.008USD
for the benefit of the community

Conversion Rate 1USD = 18.74 mexican pesos

Family support focuses on providing financial support when patients must be transferred to the city for medical treatment. The support is used to buy food, pay for a hotel and transport.

Supported Indigenous Communities

- Triqui
- Cora
- Purepecha
- Tzotzil
- Huichol



Supports
in Medical
Care



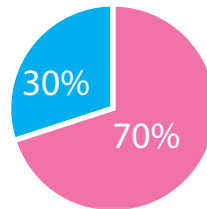
DONATIONS in-Kind



1,891 people benefited

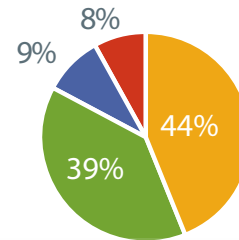
Sex

● Women
● Men



Age

● Seniors (60 years or older)
● Adults between 30 and 59 years
● Young people and adults between 15 and 29 years old
● Children under 14 years



Through GUIMEDIC donations are made of hearing aids, wheelchairs, canes, breast prostheses, among others.

Supports
in Medical
Care



DONATIONS in-Kind

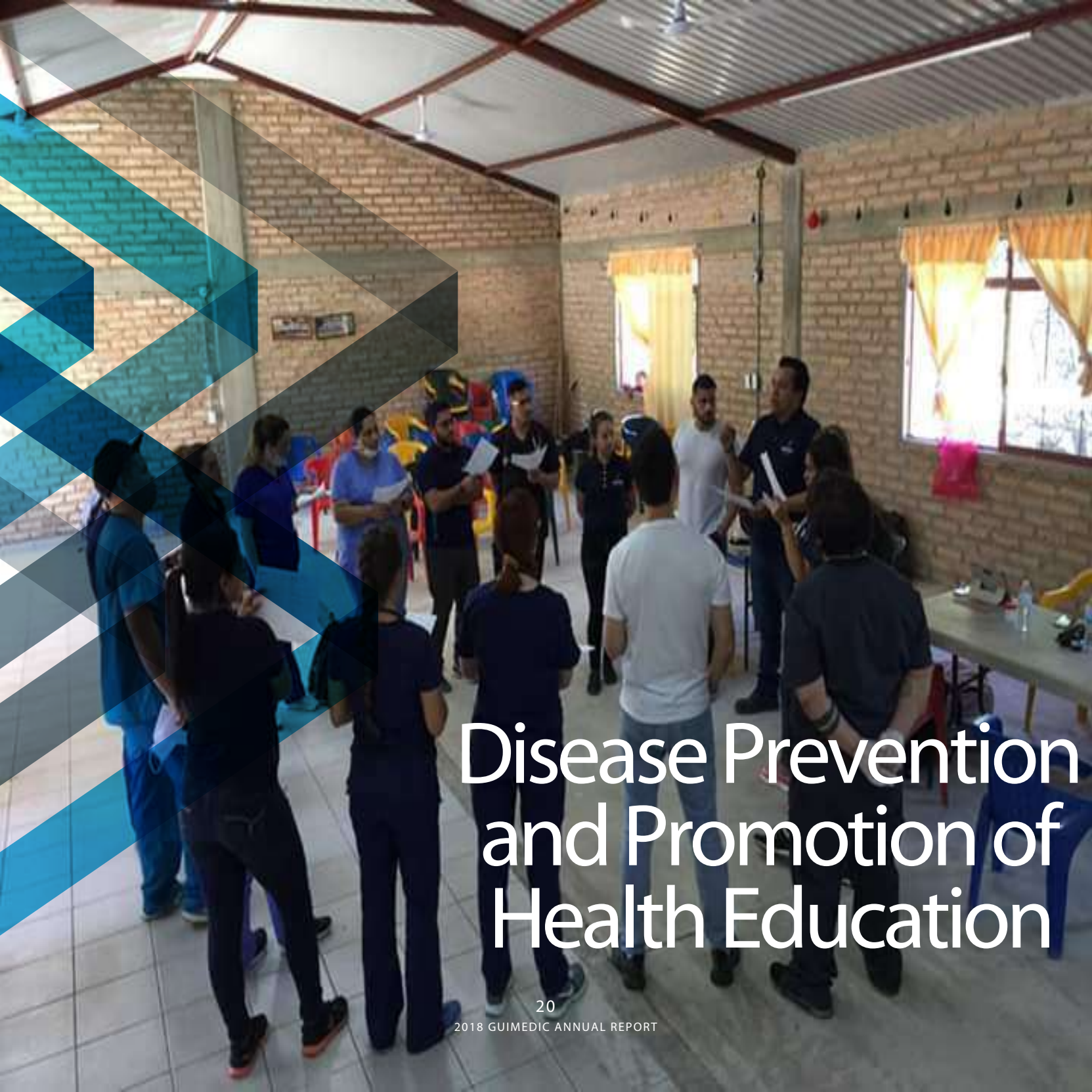


1,891 people
benefited

Through GUIMEDIC
donations are made
of hearing aids,
wheelchairs, canes,
breast prosheses,
among others.



10.672USD
for the benefit of the community
Conversion Rate 1USD = 18.74 mexican pesos



Disease Prevention and Promotion of Health Education



Prevention is the best medicine for health, that's why; conferences on various health and disease topics are offered monthly to our patients located in remote areas.

Medical CONFERENCES

In 2018 the following topics were exposed:

By Volunteer Medical Students

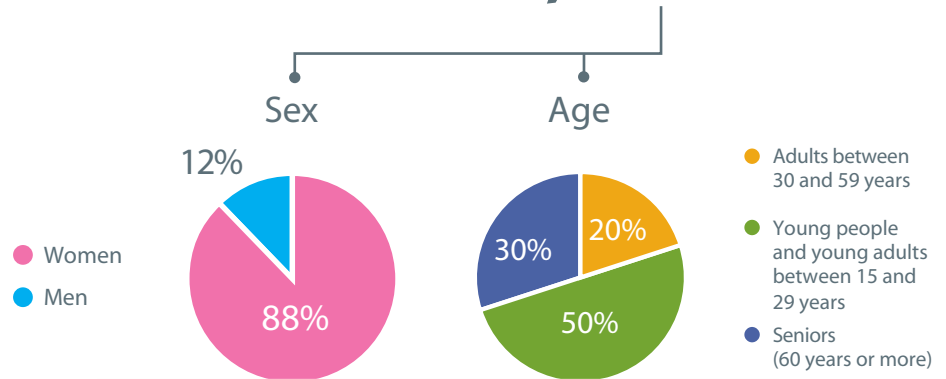
January	Physical activation and healthy life
February	Laughter therapy
March	Kidney disease
April	CPR and first aid
May	Smoking and consequences
June	Healthy nutrition
July	Diabetes: prevention and treatment
August	Parasites
September	Organ donation
October	Anorexia and bulimia
November	Pain management

By GUIMEDIC doctors

January	Child psychology
March	Eye diseases
May	Child malnutrition
July	Visual health
September	Breast cancer detection
November	Erectile dysfunction

Conference attendees

2,580





Medical CAMPAIGNS



4,605 people treated with preventive measures (taking glucose and blood pressure, applying a flu vaccine and administering deworming medicine).



During the medical campaigns there was a saving of 95% thanks to the medical AGREEMENTS signed with pharmaceutical companies.

90 participating medical students



Medical BRIGADES



People Benefited
2,350

Main state with remote areas: NAYARIT
(Sierra Madre Occidental)

Medical brigades offer health care in very remote areas and facilitate the comprehensive development of communities. In most cases we travel by air or by boat.



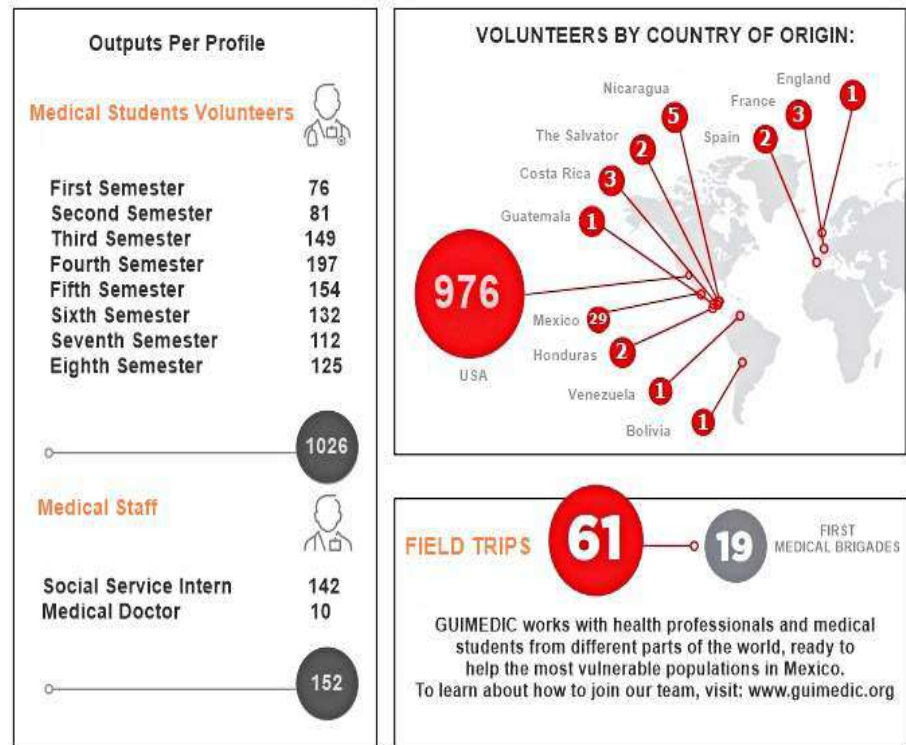
+ **6,500** flight hours

+ **28,230** hours by boat





VOLUNTEERS



1,178 medical
volunteers

